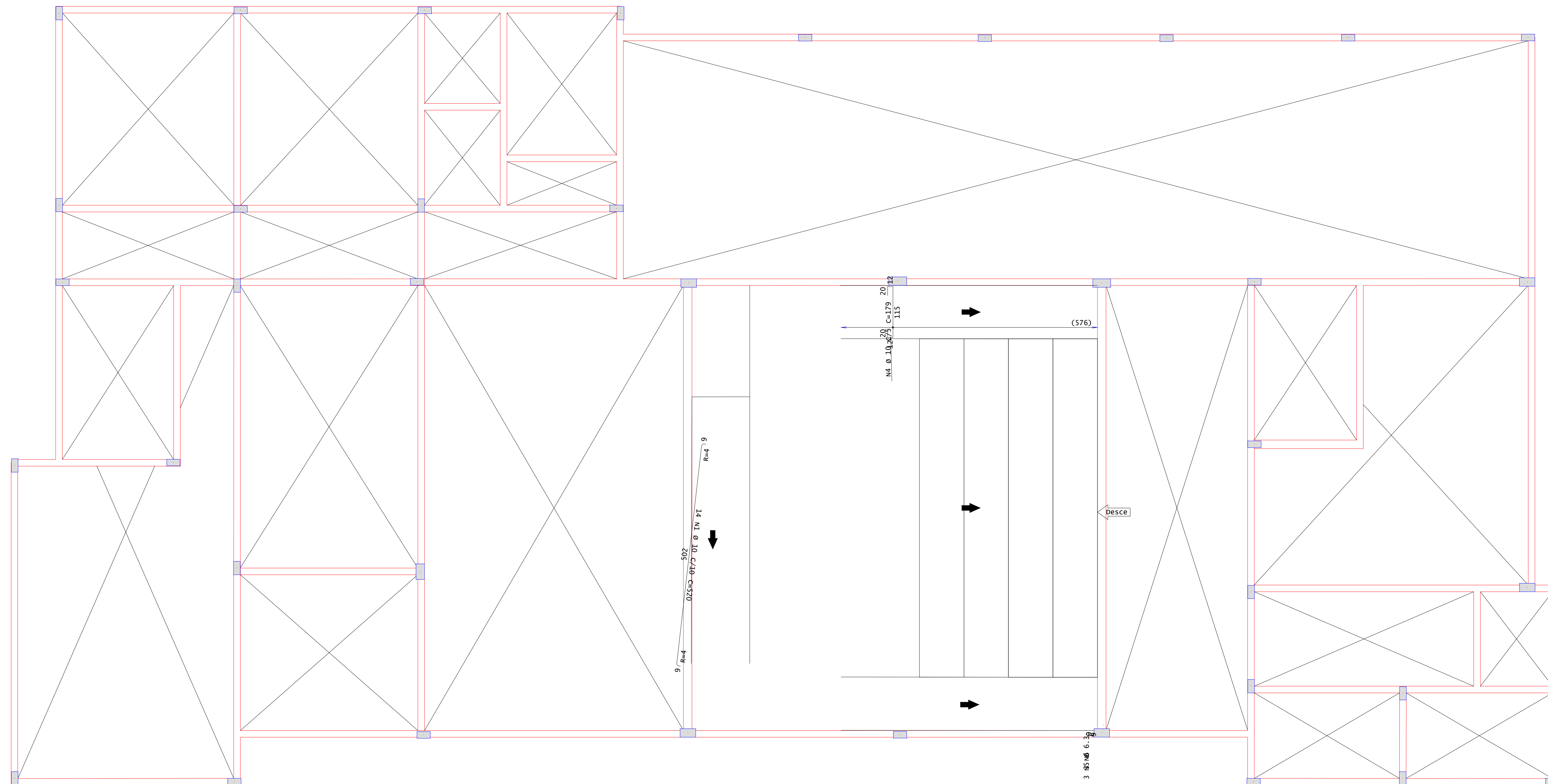


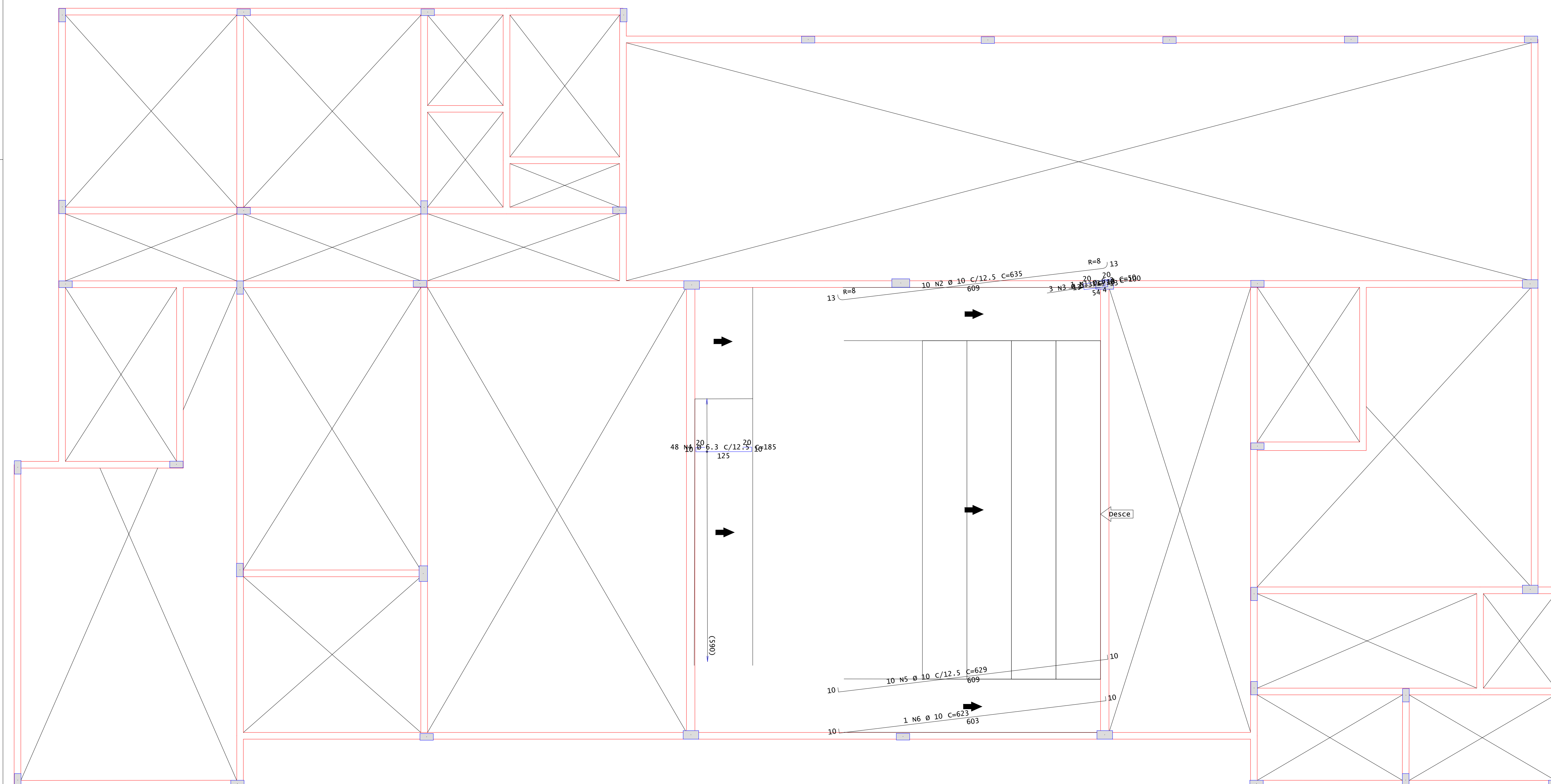
1x



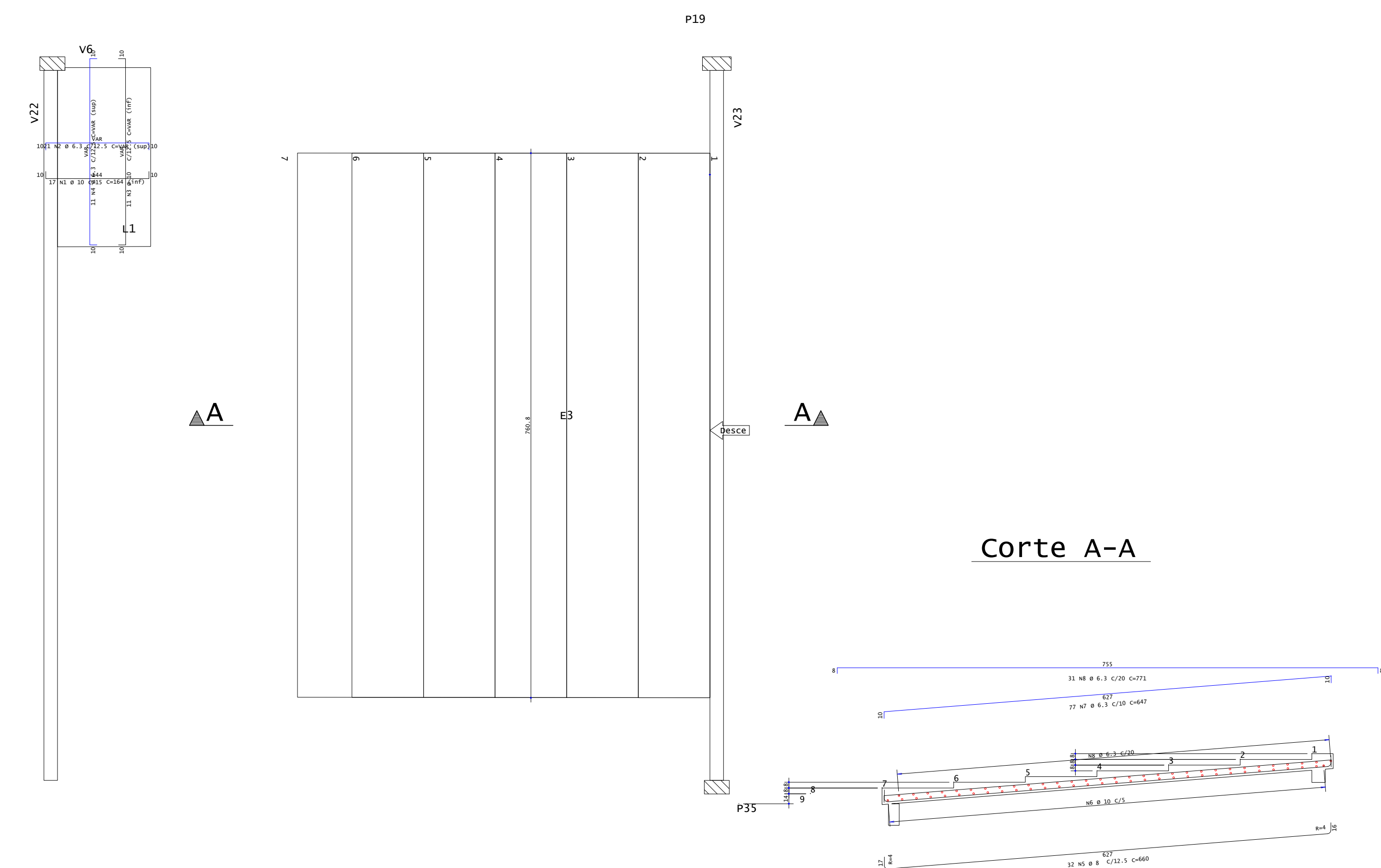
ACO	POS	BIT	QUANT	COMPLEMENTO	
				UNIT	TOTAL
				em	
Térreo - Armadura negativa secundária					
S0A 1	1	32,5	6	170	1020
S0A 2	2	10	3	144	1215
S0A 3	3	10	3	160	480
S0A 4	4	8	3	160	480
S0A 5	5	8	3	150	450
S0A 6	6	10	10	170	1790
S0A 7	7	6,3	3	144	1215
S0A 8	8	8	3	170	510
S0A 9	9	6,3	3	170	510
S0A 10	10	8	5	155	775
S0A 11	11	6,3	3	144	1215
S0A 12	12	6,3	12	120	1440
S0A 13	13	15	3	170	510
S0A 14	14	10	3	173	519
S0A 15	15	10	3	170	510
S0A 16	16	16	3	170	537
S0A 17	17	10	3	170	537
Térreo - Armadura positiva principal					
S0A 1	1	6,3	3	615	630
S0A 2	2	10	10	630	630
S0A 3	3	6,3	3	100	300
S0A 4	4	6,3	3	63	189
S0A 5	5	20	10	629	6290
S0A 6	6	20	10	629	6290

RESUMO DE AÇO			
AÇO	BIT mm	COMPR m	PESO kgf
50A	6,3	985	242
50A	8	18	7
50A	10	279	176
Peso Total	50A =		425 kgf

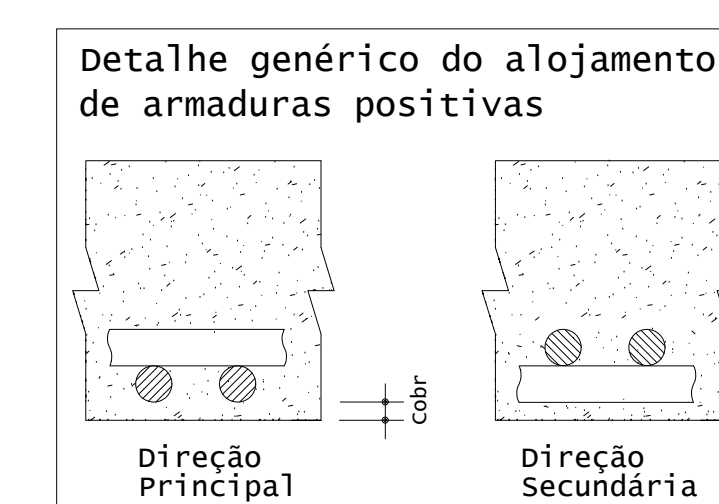
1X




Planta Escada-1 - Térreo



Corte A-A



		<h1 style="text-align: center;">TISCOSKI</h1> <h2 style="text-align: center;">ARQUITETURA E ENGENHARIA</h2>	
<h3>PROJETO ESTRUTURAL</h3>			
CAMARA MUNICIPAL DE MORRO DA FUMAÇA RUA EMILIO FRASSON, 130, BARRIO MONTE VERDE, MORRO DA FUMAÇA/SC		CONTEÚDO -PRANCHA PAZ. TÉRREO -DETALHAMENTOS	
PROPRIETÁRIO:		PRANCHA: <div style="font-size: 2em; float: right;">07/15</div>	
MUNICIPIO DE MORRO DA FUMAÇA CNPJ: 83.000.323/0001-02		RESPONSAVEL TECNICO:	
ESCALA		AREA TOTAL 554,55m²	
INDICADA	DESENHO	AMANDA	DATA AGOSTO/2025